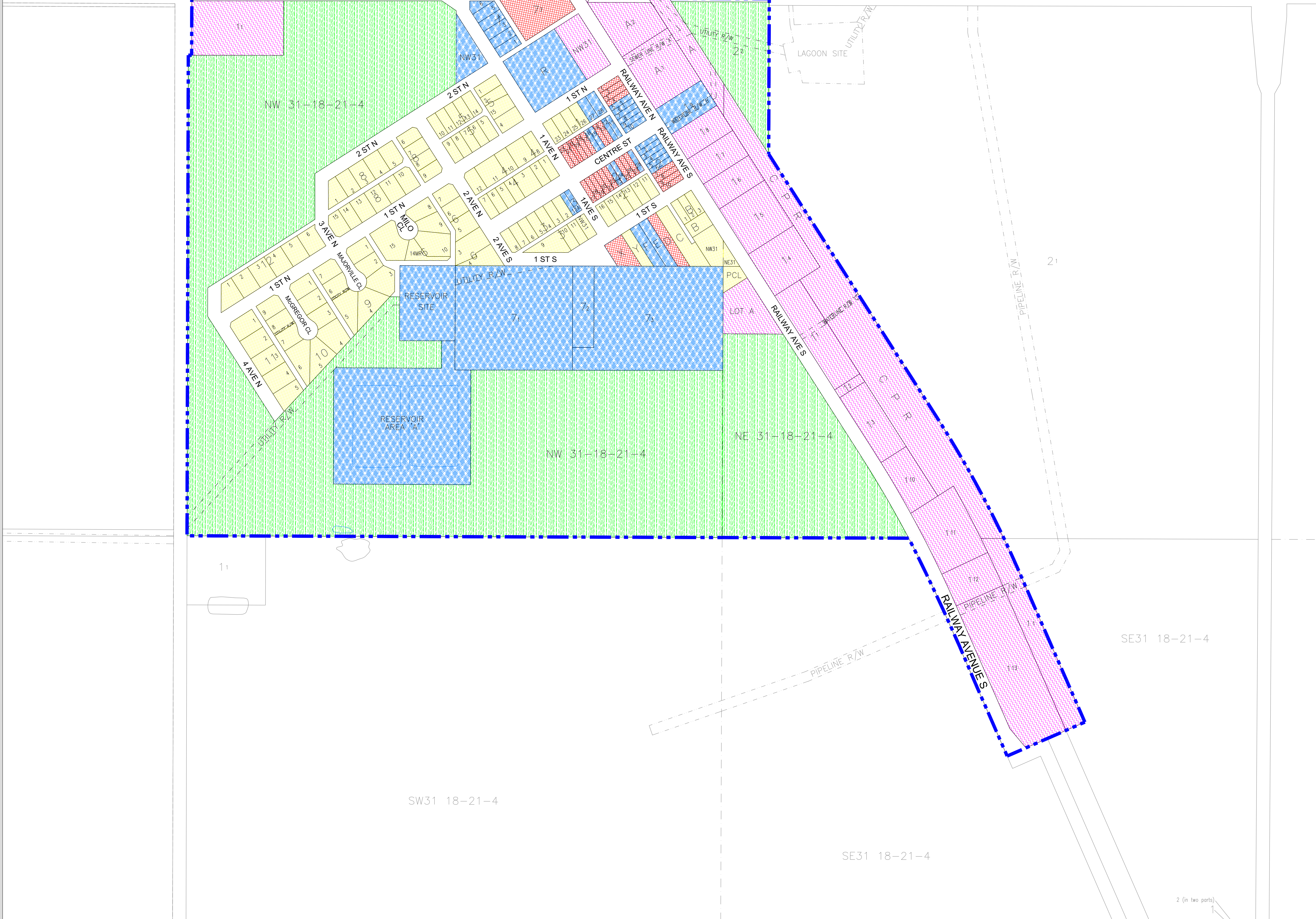


VILLAGE OF MILO
 Portions Of
 NE 31, NW 31, SE 31
 All In Twp 18, Rge 21, W 4 M

----- Village Boundary

HIGHWAY 542



LAND USE DISTRICTS

BYLAW #: 397-17 DATE: September 19, 2017
 With amendments to Bylaw #421-21

- Residential R
- Commercial C
- Industrial I
- Public P
- Urban Reserve UR

MAP PREPARED BY:
 OLDMAN RIVER REGIONAL SERVICES COMMISSION
 3105 16th AVENUE NORTH, LETHBRIDGE, ALBERTA T1H 5E8
 TEL. 403-329-1344
 "NOT RESPONSIBLE FOR ERRORS OR OMISSIONS"

PLOT SCALE 1:3000

OLDMAN RIVER REGIONAL SERVICES COMMISSION

0 100 200 300 400 Metres

February 22, 2021 N:\Vulcan-County\Milo\Milo LUD & Land Use Redesignations\Milo LUB 397-17 September 2017.dwg